



*Newtown High School
of the
Performing Arts*

***ASSESSMENT
BOOKLET***

YEAR 11

2022

This provides you with important information about the timing of assessment tasks, the content examined and the weighting of each assessable task you have this year.

Equity, Creativity, Excellence

Table of Contents

SECTION 1: POLICIES AND PROCEDURES

Senior Assessment Policy	2
Why do we need a School Assessment Policy?.....	2
How are Course Outcomes assessed?	2
Excursions and Fieldwork	2
Malpractice.....	2
What are the Responsibilities of the School?.....	3
What are the Responsibilities of the Students?.....	3
Procedures for Illness or Misadventure	4
Application for Illness/Misadventure.....	4
Absence due to Illness/Misadventure on the day of an in-school assessment task	4
Partial Absence on the day of and prior to an assessment task (excluding exam periods)	4
Absence due to Illness/Misadventure on the day an assessment task is due to be submitted	4
Failure to hand in assessment task at the required time	4
Illness/Misadventure during an in-school assessment	4
Illness/Misadventure during an examination period including lateness	5
Group performance Illness/Misadventure.....	5
Procedures for Illness/Misadventure Flow Chart.....	6
Illness/Misadventure Form.....	7
Group Performance Procedures for Illness/Misadventure Flow Chart	8
Group Performance Illness/Misadventure Form.....	9
Procedures for Extension and Approved Leave	10
Request for Extension.....	10
Approved Leave (approved by Principal or nominee)	10
Outcome of Illness Misadventure	10
Procedures for Applying for an Extension Flow Chart.....	11
Request for Extension Form.....	12
Procedures for externally delivered courses	13
Non-Completion of Preliminary/HSC Course Requirements Procedure	14
Procedures for Appeals Against 'N' Determination for Non-completion of Preliminary and HSC Course Requirements Flow Chart.....	15

SECTION 2: COURSE ASSESSMENT INFORMATION

Ancient History.....	16
Biology	18
Business Studies	20
Chemistry.....	22
Classical Ballet	24
Dance	25
Design and Technology.....	26
Drama	28
Economics	29
English Advanced and Standard	31
English Studies.....	33
English Extension 1	34
Entertainment Industry.....	36
Film Production.....	37
Food Technology.....	39
Geography.....	41
Legal Studies	43
Mathematics Standard.....	44
Mathematics Advanced	46
Mathematics Extension 1	48
Modern History	50
Music Course 1.....	52
Music Course 2.....	54
PD/H/PE	56
Photography	59
Physics	61
Textiles and Design	63
Visual Arts.....	65
Assessment Booklet Return Slip	67

Newtown High School of the Performing Arts

Senior Assessment Policy

Why do we need a School Assessment Policy?

- The School Assessment Policy is designed so that no student can be unfairly advantaged or disadvantaged by the school's system of assessment.
- Assessment at Newtown High School of the Performing Arts encourages progressive development of skills and knowledge while ensuring:
 - consistency across courses
 - fairness in marking and reporting
 - co-ordination of the assessment program to ease the load on students.

How are Course Outcomes assessed?

Students are assessed against Course Outcomes through a range of assessment tasks in each course. An outcome is a description of the learning which has taken place. Student progress in achieving course outcomes is reported twice a year.

A range of tasks is used for assessment and will vary from course to course. These may include:

- Examinations which may take a written, practical and oral form
- Essays, research tasks, assignments, portfolios, log books
- Practical tasks, projects and major works.

Excursions and Fieldwork

Some courses require students to undertake mandatory fieldwork or mandatory excursions to achieve and assess some outcomes. In the case of unavoidable absence from such activities students must negotiate alternate arrangements and follow Illness/Misadventure procedures.

Malpractice

Malpractice is any activity undertaken by a student that allows them to gain an unfair advantage over others. It includes, but is not limited to:

- breaching published school examination rules
- being in possession of unauthorised notes
- being in possession of electronic devices during a test or examination
- using words, ideas, designs or workmanship of others without acknowledgement
- copying from another student
- presenting another person's work as their own
- paying someone to write or prepare an assessment task
- offering false documentation or explanations in support of an appeal/non-serious attempt in an assessment task
- work presented which contains frivolous and/or objectionable material
- assisting another student to engage in malpractice
- behaving in a way likely to disrupt the work or concentration of other students

Students must engage in ethical practice regarding assessment tasks. Work submitted for assessment tasks must be the student's own work. Malpractice in the HSC examination will disqualify students from an award in that course; similarly, malpractice within the school context of the Preliminary or HSC course, will render a task a 'zero' score.

Where the teacher responsible for a task has reason to suspect malpractice, this will be brought to the attention of the Head Teacher. If both are in agreement then the student will be awarded a zero for the task. Students may appeal any such decision using the appeals procedures existing within the school.

In cases of proven malpractice in Preliminary and HSC assessment tasks, all schools are required to register this information with NESAs.

What are the responsibilities of the school?

An assessment schedule has been developed for each course within the guidelines provided by NSW Education Standards Authority (NESA) incorporating mandatory assessment components and weightings for that course. Components are the parts of courses or major areas to be assessed. Weightings are the percentages of marks to be allocated to the components.

The school is required to provide students with the following information;

- An Assessment Calendar, which outlines what components are to be assessed, when the assessment tasks are scheduled and the relative weighting attached to each assessment task.
- Assessment tasks will be of the same type and have the same weighting for all classes studying that course. At the completion of each task, students will receive a *mark, rank and cumulative rank, detailed marking criteria and written feedback concerning areas for development*.
- Written notification of the specific nature of each calendared assessment task at least TWO weeks in advance. This is a more detailed explanation of the specific nature of the task.
- In exceptional circumstances some tasks may be rescheduled or substituted; in such cases teachers will inform students of the new arrangements in writing at least **two weeks** in advance.
- Official warning letters of concern will be posted home to parents/carers outlining the areas of unsatisfactory completion of the Preliminary/HSC course requirements.

What are the responsibilities of the students?

- Students must demonstrate sustained diligence and effort in each subject.
- Students must attend classes regularly and ensure their attendance does not fall below 85%.
- Students must complete all set tasks in order to achieve course outcomes.
- Students must engage in ethical practice regarding assessment tasks.
- Students are required to participate in all lessons constructively.
- Every student has the responsibility to follow the procedures outlined in the school's assessment booklet. Every student must also be familiar with the course information contained in this booklet.
- It is important that the student speaks with their teacher or head teacher of the faculty if there is any doubt about the requirements of the assessment task.
- It is the responsibility of the student to be present for, or to hand in all assessment tasks **at the required time** as specified in the booklet and the assessment calendar.
- Excluding exam periods, students must be **present** for the **whole day** in which an assessment task is scheduled. Failure to do so will require an Illness/misadventure application. It is not acceptable for a student to attend school to fulfil the requirements of an assessment task **only** and not be present at **all** the timetabled lessons for that particular day.
- Students need to arrive promptly to examinations. Students who arrive 10 minutes or more after an examination start time will not be permitted entry. They will need to reschedule and apply for Illness/misadventure with supporting documentation.
- Hand-in tasks include tasks such as research essays, written reports, materials as part of in-class presentations and practical work. All assessment tasks are to be submitted on the **due date** at the **specified time**. It is the student's responsibility to ensure that these tasks are submitted on time.
- Unless otherwise stated on the assessment notification, all hand-in tasks must be submitted at the beginning of the lesson on the day of the task. Failure to do so will require an illness/misadventure application.
- Hand-in tasks are to be submitted to the class teacher or the relevant faculty head teacher and the Assessment Issue Record signed. Students must not leave hand-in tasks on teachers' desks.
- If the student has only completed part of a hand in task, this part must be submitted to the class teacher on the due date.
- In the case of illness or misadventure it is the student's responsibility to apply to the Assessment Review Committee (ARC) for consideration.

Procedures for Illness or Misadventure

Consideration is given to students who suffer Illness or Misadventure prior to or at the time of a task. These procedures must be followed in order to ensure fairness for all students.

NOTE: Technology failure or printer breakdown will not be accepted as a valid reason for late submission or absence. 'Teching' is also not a valid excuse for missing a scheduled assessment task.

Application for Illness/Misadventure

An Illness/Misadventure Application Form must be completed and all paperwork, along with relevant supporting documentation, is to be submitted **within TWO days** of the student's return to school. In the case of Illness, relevant written evidence from a medical practitioner covering the period of absence/non-submission is mandatory in order to be considered by the Assessment Review Committee (ARC).

The Illness/Misadventure form can be obtained from the faculty Head Teacher, the Deputy Principal in charge of the year group or downloaded from the school's website.

In the case of:

1. **Absence due to Illness/Misadventure on the day of an in-school assessment task**
 - The student or family member is requested to contact the school to notify the relevant Head Teacher **on the morning the task is scheduled.**
 - Students must report to the relevant Head Teacher on the **first day of their return to school**, complete the Illness/Misadventure form and return it within 2 days.
2. **Partial Absence on the day of and prior to an assessment task** (excluding exam periods)
 - The student or family member is requested to contact the school to notify the relevant Head Teacher **on the morning the task is scheduled.**
 - Students must report to the relevant Head Teacher on the day of the task; complete the Illness/Misadventure form and return it within 2 days.
3. **Absence due to Illness/Misadventure on the day an assessment task is due to be submitted**
 - The student or family member is requested to contact the school to notify the relevant Head Teacher on the **same day a task is due to be handed in.**
 - On the **first day of the student's return to school** they must submit the task to the Head Teacher, complete the Illness/Misadventure form and return it within 2 days.
4. **Failure to hand in assessment task at the required time**
 - When submitting an assessment task after the required time on the day of the assessment task, the student is required to complete the Illness/Misadventure form and return it within 2 days.
5. **Illness/misadventure during an in-school assessment**
 - The student must notify the supervisor of the task that they are feeling unwell **before they view the task.** At this stage the student will need to decide;
 - (a) to sit the task, in which case the mark earned will be awarded. The student cannot apply retrospectively for any special consideration due to illness.
 - (b) leave the task and apply for illness/misadventure. The student must then collect an Illness/Misadventure form from the relevant Head Teacher or Deputy Principal and follow the illness/misadventure process, which will require a medical certificate dated the day of the task.

6. **Illness/Misadventure during an examination period including lateness**
- The student must contact the Year 11 Deputy Principal.
 - The Deputy Principal will liaise with the student and organise a rescheduling of the affected exam(s).
 - The student must complete an Illness/Misadventure form for the missed exam and return it to the Year 11 Deputy Principal within two days.
7. **Group performance Illness/Misadventure**
- When a group performance cannot go ahead on a scheduled date, the students affected need to complete a group performance Illness/Misadventure form.
 - This form needs to be returned to the relevant Head Teacher within two days. The Head Teacher will reschedule an alternative date for the performance.
 - The student responsible for this group Illness/Misadventure application must complete an individual Illness/Misadventure form outlining the nature of their application. Please note that this application will be considered separately to the group's application.

NOTE: To ensure equity and fairness, questions within the rescheduled task may vary from the original assessment task. However the questions will be comparable and address the same outcomes.

Procedures for Illness/Misadventure

Students missing an assessment task and wishing to make application for Illness or Misadventure must follow the procedure outlined below:

Step One: Student contacts the school

Student is requested to inform the school of the absence.



Step Two: On first day of return

It is the student's responsibility:

- (i) Report to the Head Teacher of the faculty
- (ii) Complete Illness / Misadventure application including head teacher comments and parent/carer signature.
- (iii) Submit application form to faculty Head Teacher (or Deputy Principal for exams) within 2 days of their return.



Step Three: Resolution and Feedback

Assessment Review Committee consisting of a Deputy Principal and two Head Teachers will meet to consider application. Resolution and feedback is given to head teacher, student and parents.



Illness/Misadventure Form

Name: Course: Year:

Name of Assessment Task:
Performance, Assessment Task No.....
Task, Weighting:
Date Due:
Class Teacher:

Nature of Task: (Please circle) Examination,
Performance, Practical Task, Speaking Task,
Written Task, Viewing Assignment, Research
Activity, Portfolio, Field Work.

Section A

To be completed by the student

Outline reasons for this application for Illness/Misadventure and attach relevant documentation.

.....
.....
.....

Parent/Carer Signature: Student Signature:

Date: Date:

Section B

To be completed by the Head Teacher

Head Teacher's Name: Faculty: Course:

Receipt date of Illness/Misadventure form:

Task submitted/completed Yes No Date Completed:

Date of rescheduled task:

Comments:

HT Signature:

Section C

To be completed by the Assessment Review Committee

Resolution: Accepted / Rejected

.....
.....

ARC Members:

Copy to: Committee/Relevant Head Teacher /Student/Parent/Carer/Student File

Group Performance Procedures for Illness/Misadventure

Students wishing to make application for Group Illness or Misadventure must follow the procedure outlined below:

Step One: Students affected complete form

Complete the Group Illness/Misadventure form.



Step Two: Contact Head Teacher

It is the student's responsibility:

- (i) Report to the Head Teacher of the faculty
- (ii) Complete Group Illness / Misadventure Application including Head Teacher comments.
- (iii) Submit application form to faculty Head Teacher within 2 days.

NOTE: If a student is responsible for this group Illness/Misadventure application they must complete an individual Illness/Misadventure form, otherwise they will be awarded a mark of zero.



Step Three: Resolution and Feedback

Assessment Review Committee consisting of a Deputy Principal and two Head Teachers, will meet to consider both individual and group application. Resolution and feedback given to head teacher, student and parents.

Newtown High School of the Performing Arts

Group Performance Illness/Misadventure Form



Name/Names of students causing misadventure:

.....
.....

Section A

List of students affected:

.....
.....

Course: Year:

Name of Group Performance: Weighting Date Due:

Class Teacher:

Outline reasons for this application for Illness/Misadventure:

.....
.....

Attention: If a student is responsible for this group illness/misadventure application they MUST also complete an individual illness/misadventure form otherwise they will be awarded a mark of zero.

Section B

To be completed by the Head Teacher

Head Teacher's Name: Course:

Faculty: Date:

Receipt date of Illness/Misadventure form:

Task submitted/completed Yes No Date of Rescheduled Task:

Comments:

.....
.....

HT Signature:

Section C

To be completed by the Assessment Review Committee

Resolution:

.....
.....

ARC Members:

Copy to: Committee/Relevant Head Teacher /Student/Parent/Carer/Student File

Procedures for Extension and Approved Leave

Request for Extension

Students are provided with the opportunity to apply for an extension if they feel they have a genuine inability to meet a scheduled due date. These applications are to be expressed in writing using the request for extension form provided by the school. These forms are to be collected from the Deputy Principal and must be returned to the relevant Deputy Principal within two days of issue. All applications for an extension must be made 5 school days prior to the due date.

Approved Leave (approved by Principal or nominee)

If a student knows in advance that they will be absent on the day a task is due, then the task should be handed in prior to the due date. When the task is to be completed in class, then arrangements must be made with the Head Teacher prior to the task. These arrangements need to be noted in writing and communicated to the student.

The consequences of not following these procedures may result in your application for Illness/Misadventure being rejected and a zero mark being awarded.

Outcome of Illness/Misadventure

The Assessment Review Committee (comprising of the Deputy Principals and two Head Teachers) will consider all Illness/Misadventure cases. They will judge the presented evidence and decide whether the application is to be accepted or rejected.

If the application is accepted one of three things may occur:

1. If the task has already been completed/submitted, the mark will be awarded.
2. If the task has not been completed/submitted, it will be rescheduled and the mark will be awarded.
3. In exceptional circumstances, where undertaking an alternative task is not possible, the Principal may determine that the student's relative assessment rank be maintained. This will be calculated at the end of the entire assessment period. This calculated mark would then replace the 'zero'.

If the application is rejected, a mark of zero will be awarded. The student may choose to apply to the Principal in writing to reconsider the Assessment Review Committee's decision. This appeal must be made within two weeks of receiving the decision.

Procedures for Applying for an Extension

Students wishing to apply for an extension must follow the procedure outlined below:

Step One:

Student fills in the Request for Extension Form which can be obtained from the Deputy Principal in charge of their year group.



Step Two:

Within two days of the form being issued students must complete all the paperwork and submit the form to the Deputy Principal in charge of their year group.
This application must be made at least 5 school days prior to the official due date.



Step Three: Resolution and Feedback

The application will be considered by the relevant Deputy Principal and the decision will be communicated in writing to the relevant Head Teacher, student and parents/carers.



Request for Extension Form

Name: Course: Year:

Class Teacher: Weighting: Date Due:

Name of Assessment Task : Nature of Task: *(please circle)*

- | | | | | |
|--------------------------|-----------------------|----------------------|---------------------|---------------------|
| <i>Examination</i> | <i>Performance</i> | <i>Assignment</i> | <i>Field Work</i> | <i>Portfolio</i> |
| <i>Research Activity</i> | <i>Practical Task</i> | <i>Speaking Task</i> | <i>Viewing Task</i> | <i>Written Task</i> |

Other (please specify):

Section A

Date of Assessment Task:/...../.....

Reason for application (attach supporting letter or documentation as necessary)

.....

State sufficient details to support your case for consideration, to gain an extension of time.

Signed (Student) : Date:/...../.....

Signed (Parent) : Date:/...../.....

Section B

Head Teacher's Comment:

.....

Signed: Date:/...../.....

Form Issued on:/...../.....	Form Received on:/...../.....	By:
-----------------------------------	-------------------------------------	-----------

Section C

Decision:	
.....	
Signed:	Date:/...../.....

ASSESSMENT PROCEDURES AND REQUIREMENTS FOR STUDENTS UNDERTAKING AN EXTERNALLY DELIVERED COURSE WITH: NSW SCHOOL OF LANGUAGES, SYDNEY DISTANCE EDUCATION H.S. OR TAFE/ OTHER RTO

Attendance for assessments/Exams or **Face-to-Face** lessons delivered through external providers take **precedence** over **school-based assessments/exams or activities**.

Students studying an EVET course

Students are required to attend lessons at TAFE/other RTO venue at all times in order to fulfill the competencies needed to successfully complete the course requirements and be eligible for an HSC and/or ATAR.

NOTE: This is also applicable during school Exam or Assessment Week/s

Step One:

Check your School Assessment Calendar for any clashes

If a student has a school-based assessment that falls during their external lesson



Step Two:

See Ms George immediately

NOTE: Students are required to attend their external course during school's Assessment/Exam weeks. **Studying for exams during this period is not an option for non-attendance.**

If there is an **extenuating** circumstance, it is the responsibility of the student to inform Ms George at least 2 weeks before scheduled task at school in order for her to negotiate student's absence from TAFE/other RTO with EVET coordinator.

Students studying a course with NSW School of Languages



Step One:

Check your School Assessment Calendar for any clashes

If a student has an assessment at the NSW School of Languages on the same day as a school-based assessment or exam, their **Language Assessment** takes priority.



Step Two:

See Ms George immediately in order to organise rescheduling of the school-based task with the Deputy in Charge of the Year

Subjects studied outside school are just as important in completing required HSC units and or acquiring an ATAR as those studied as school. The process involved in trying to reschedule tasks/exams held at NSW School of Languages or TAFE is problematic.

Non-Completion of Preliminary/HSC Course Requirements Procedure

1. The Non-completion of a course requirements procedure commences when a student has not:
 - (a) **Followed** the course developed by the board; and
 - (b) **Applied** themselves with diligence and sustained effort to the set tasks and experiences provided in the course by the school; and
 - (c) **Achieved** some or all of the course outcomes.

2. The **first** official warning letter is issued indicating the area(s) of concern. The Head Teacher of the faculty interviews the student in danger of not satisfactorily completing a course. The Head Teacher documents the interview and the record of interview is completed which outlines the agreed Plan of Improvement.

3. The **second** official warning letter will be issued for completely different reasons as outlined in the first official warning, ie a student cannot receive two letters for the same task. A pattern of indiscretions which illustrate that the course completion criteria (a), (b) and/or (c) has not been met needs to be established.

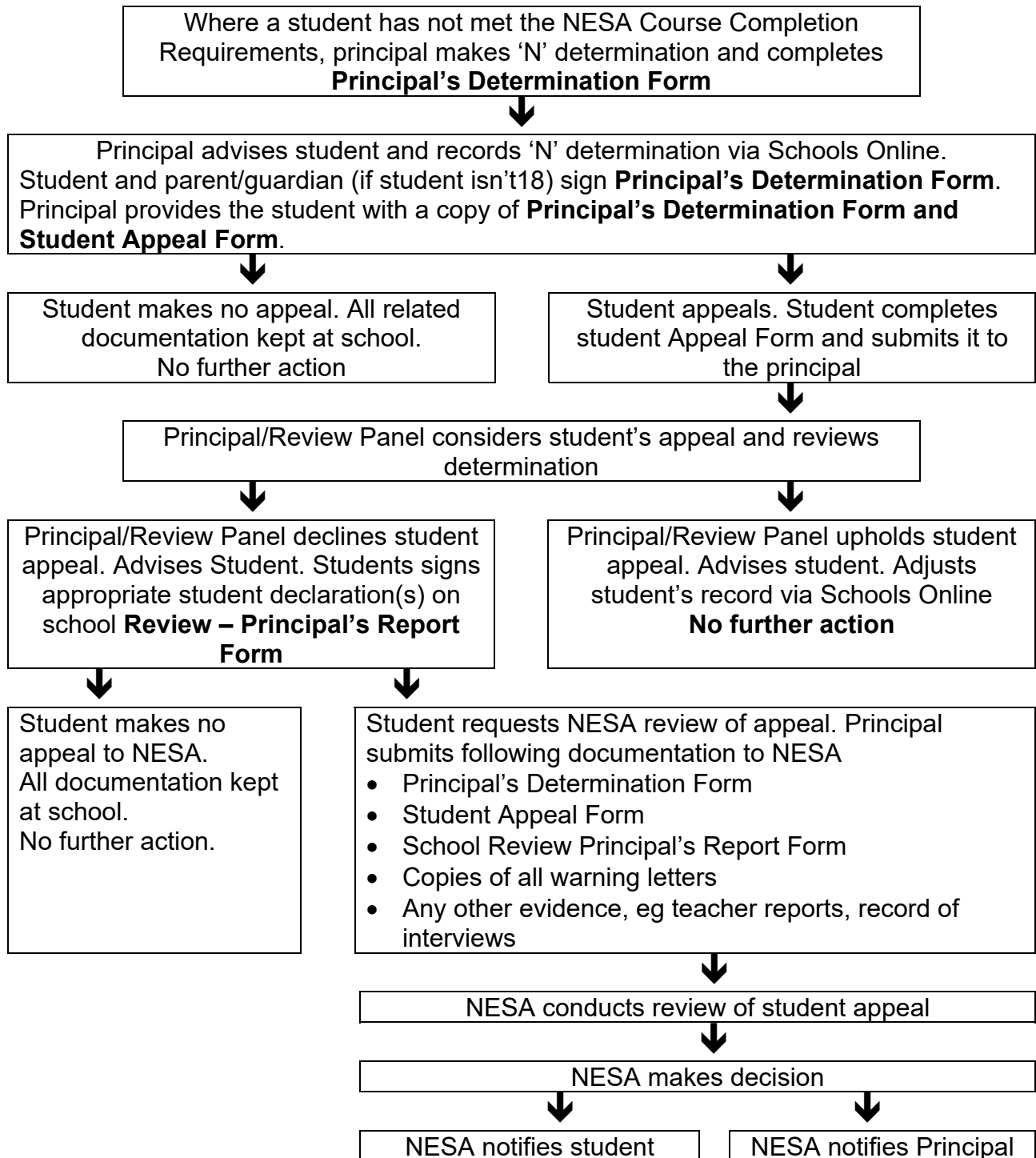
Once the second official warning letter is issued an interview with a designated member of the executive and the student will be organised to discuss all outstanding concerns. At the interview a Plan for Improvement will be negotiated and be implemented over an agreed time. This outcome is recorded.

4. Receipt of the **third** official warning letter for any one further indiscretion or a series of indiscretions will result in an interview with the Deputy Principal in charge of the year group, parent or caregiver and the student. At this meeting the Deputy Principal will make a determination, which may include implementation of a negotiated Program of Improvement.

NB: Students who have received a minimum of two official warning letters in a single course and have not completed the requirements detailed on these letters are at risk of receiving an 'N' determination for that course.

Please refer to the flow chart on the next page.

Procedures for appeals against ‘N’ determinations for Non-completion of Preliminary and HSC course requirements.



Ancient History Preliminary Course

Objectives	Course Outcomes
<p>Knowledge and Understanding</p> <p>Students:</p> <ul style="list-style-type: none"> ● develop knowledge and understanding of a range of features, people, places, events and developments of the ancient world in their historical context ● develop an understanding of continuity and change over time. 	<p>AH11-1 describes the nature of continuity and change in the ancient world</p> <p>AH11-2 proposes ideas about the varying causes and effects of events and developments</p> <p>AH11-3 analyses the role of historical features, individuals and groups in shaping the past</p> <p>AH11-4 accounts for the different perspectives of individuals and groups</p> <p>AH11-5 examines the significance of historical features, people, places, events and developments of the ancient world</p>
<p>Skills</p> <p>Students:</p> <ul style="list-style-type: none"> ● undertake the process of historical inquiry ● use historical concepts and skills to examine the ancient past ● communicate an understanding of history, sources and evidence, and historical interpretations 	<p>AH11-6 analyses and interprets different types of sources for evidence to support an historical account or argument</p> <p>AH11-7 discusses and evaluates differing interpretations and representations of the past</p> <p>AH11-8 plans and conducts historical investigations and presents reasoned conclusions, using relevant evidence from a range of sources</p> <p>AH11-9 communicates historical understanding, using historical knowledge, concepts and terms, in appropriate and well-structured forms</p> <p>AH11-10 discusses contemporary methods and issues involved in the investigation of ancient history</p>

Ancient History Preliminary Course

Task	Course Component	Weighting	Outcomes	Task	Date
1	Historical Investigation	30%	11-3, 11-5, 11-8	Oral Presentation	Term 2 Week 2
2	Features of Ancient Societies	35%	11-2, 11-9	Hand in booklet	Term 2 Week 9
3	Case Studies: <ul style="list-style-type: none"> • Persepolis • Mycenae 	35%	11-4, 11-6, 11-10	Yearly Exam	Term 3 Weeks 8-9

Biology Preliminary Course

Course Structure

The Year 11 Biology course is organised into a number of modules. The modules consist of core content to be covered in 120 indicative hours. Practical experiences are an essential component of the Year 11 course. Students will complete 35 indicative hours of practical/field work during the course within the 120 indicative course hours, including 15 hours allocated to depth studies integrating skill and knowledge outcomes. Practical experiences must include at least one field work experience.

Year 11 Course: 120 indicative hours

The course incorporates the study of:

- Module 1: Cells as the Basis of Life (30 indicative hours)
- Module 2: Organisation of Living Things (30 indicative hours)
- Module 3: Biological Diversity (30 indicative hours)
- Module 4: Ecosystem Dynamics (30 indicative hours)

Objectives	Outcomes
<i>Students will develop further skills in:</i>	<i>A student:</i>
questioning and predicting	11-1 develops and evaluates questions and hypotheses for scientific investigation
planning investigations	11-2 designs and evaluates investigations in order to obtain primary and secondary data and information
conducting investigations	11-3 conducts investigations to collect valid and reliable primary and secondary data and information
processing data and information	11-4 selects and processes appropriate qualitative and quantitative data and information using a range of appropriate media
analysing data and information	11-5 analyses and evaluates primary and secondary data and information
problem solving	11-6 solves scientific problems using primary and secondary data, critical thinking skills and scientific processes
communicating	11-7 communicates scientific understanding using suitable language and terminology for a specific audience or purpose
<i>Students will develop knowledge and understanding of:</i>	<i>A student:</i>
the structure and function of organisms	11-8 describes single cells as the basis for all life by analysing and explaining cells' ultrastructure and biochemical processes
	11-9 explains the structure and function of multicellular organisms and describes how the coordinated activities of cells, tissues and organs contribute to macroscopic processes in organisms
the Earth's biodiversity and the effect of evolution	11-10 describes biological diversity by explaining the relationships between a range of organisms in terms of specialisation for selected habitats and evolution of species
	11-11 analyses ecosystem dynamics and the interrelationships of organisms within the ecosystem

Biology Preliminary Course

Task	Course Component	Weighting	Outcomes	Task	Date
1	Module 1: Cells as the Basis of Life	30%	11-2, 11-3, 11-4, 11-5, 11-6, 11-8	Working Scientifically Skills Task (WS 25%, K&U 5%)	Term 2 Week 2
2	Modules 1 and 2: Cells as the Basis of Life Organisation of Living Things	30%	11-1, 11-7, 11-8, 11-9 plus at least two of 11-2, 11-3, 11-4, 11-5, 11-6	Depth Study (WS 25%, K&U 5%)	Term 3 Week 4
3	All Modules and Working Scientifically content: Cells as the Basis of Life Organisation of Living Things Biological Diversity Ecosystem Dynamics	40%	11-1, 11-2, 11-3, 11-4, 11-5, 11-6, 11-7, 11-8, 11-9, 11-10, 11-11	Yearly Exam (WS 10%, K&U 30%)	Term 3 Weeks 8-9

Business Studies Preliminary Course

Objectives	Preliminary Course Outcomes
<p><i>Students develops knowledge and understanding about:</i> The nature, role and structure of business</p>	<p>P1 discusses the nature of business, its role in society and types of business structure P2 explains the internal and external influences on businesses P3 describes the factors contributing to the success or failure of small to medium enterprises</p>
Internal and external influences on business	P4 assesses the processes and interdependence of key business functions
The functions and processes of business activity	P5 examines the application of management theories and strategies
Management strategies and their effectiveness	P6 analyses the responsibilities of business to internal and external stakeholders
<p><i>The student develops skills to:</i> Investigate, synthesise and evaluate contemporary business issues and hypothetical and actual business situations</p> <p>Communicate business information and issues using appropriate formats</p> <p>Apply mathematical concepts appropriate to business situations</p>	<p>P7 plans and conducts investigations into contemporary business issues P8 evaluates information for actual and hypothetical business situations P9 communicates business information and issues in appropriate formats P10 applies mathematical concepts appropriately in business situations</p>

Business Studies Preliminary Course

Task	Course Component	Weighting	Outcomes	Task	Date
1	Nature of Business Business Planning	35%	P1, P2, P3, P7	SME Investigation Task Oral Presentation	Term 2 Week 2
2	Business Planning	30%	P8, P9	Business Plan	Term 2 Week 9
3	Nature of Business Business Management Business Planning	35%	P5, P6, P8, P10	Yearly Exam	Term 3 Weeks 8-9

Chemistry Preliminary Course

Course Structure

The Year 11 Chemistry course is organised into a number of modules. The modules consist of core content to be covered in 120 indicative hours. Practical experiences are an essential component of the Year 11 course. Students will complete 35 indicative hours of practical work during the course within the 120 indicative course hours, including 15 hours allocated to depth studies integrating skill and knowledge outcomes.

Year 11 Course: 120 indicative hours

The course incorporates the study of:

- Module 1: Properties and Structure of Matter (30 indicative hours)
- Module 2: Introduction to Quantitative Chemistry (30 indicative hours)
- Module 3: Reactive Chemistry (30 indicative hours)
- Module 4: Drivers of Reactions (30 indicative hours)

Objectives	Outcomes
<i>Students will develop further skills in:</i>	<i>A student:</i>
questioning and predicting	11-1 develops and evaluates questions and hypotheses for scientific investigation
planning investigations	11-2 designs and evaluates investigations in order to obtain primary and secondary data and information
conducting investigations	11-3 conducts investigations to collect valid and reliable primary and secondary data and information
processing data and information	11-4 selects and processes appropriate qualitative and quantitative data and information using a range of appropriate media
analysing data and information	11-5 analyses and evaluates primary and secondary data and information
problem solving	11-6 solves scientific problems using primary and secondary data, critical thinking skills and scientific processes
communicating	11-7 communicates scientific understanding using suitable language and terminology for a specific audience or purpose
<i>Students will develop knowledge and understanding of:</i>	<i>A student:</i>
the fundamentals of chemistry	11-8 explores the properties and trends in the physical, structural and chemical aspects of matter
	11-9 describes, applies and quantitatively analyses the mole concept and stoichiometric relationships
the trends and driving forces in chemical interactions	11-10 describes biological diversity by explaining the relationships between a range of organisms in terms of specialization for selected habitats and evolution of species explores the many different types of chemical reactions, in particular the reactivity of metals, and the factors that affect the rate of chemical reactions
	11-11 analyses the energy considerations in the driving force for chemical reactions

Chemistry Preliminary Course

Task	Course Component	Weighting	Outcomes	Task	Date
1	Modules 1 and 2: Properties and Structure of Matter Introduction to Quantitative Chemistry	25%	11-2, 11-3, 11-4, 11-5, 11-6, 11-7, 11-8, 11-9	Practical Skills Assessment Task (WS 20%, K&U 5%)	Term 2 Week 2
2	Modules 2 and 3: Introduction to Quantitative Chemistry Reactive Chemistry	35%	11-1, 11-7, 11-9, 11-10 plus at least two of 11-2, 11-3, 11-4, 11-5, 11-6	Depth Study Assessment Task (WS30%, K&U 5%)	Term 3 Week 2
3	All Modules: Properties and Structure of Matter Introduction to Quantitative Chemistry Reactive Chemistry Drivers of Reactions	40%	11-1, 11-2, 11-3, 11-4, 11-5, 11-6, 11-7, 11-8, 11-9, 11-10, 11-11	Yearly Exam (WS 10%, K&U 30%)	Term 3 Weeks 8-9

Classical Ballet Preliminary Course

Task	Course Component	Weighting	Outcomes	Task	Date
1	Classical Ballet Performance and Appreciation	30%	<ul style="list-style-type: none"> Understands and performs Classical Ballet technique, style and performance quality with due consideration of safe dance practices. Understands the artistic and cultural context of Classical Ballet. Demonstrates in written and oral form the ability to analyse and synthesise information to make informed judgements of Classical Ballet 	Part 1 Performance of Giselle repertoire solo (20%) Part 2 Written (10%)	Term 1 Week 10
2	Classical Ballet Performance, Technique and Appreciation	20%	<ul style="list-style-type: none"> Understands and performs Classical Ballet technique, style, and performance quality with due consideration of safe dance practices. 	<ul style="list-style-type: none"> Performance of Major Study repertoire solo-20% 	Term 2 Week 8
3	Classical Ballet Technique	50%	<ul style="list-style-type: none"> Understands and performs Classical Ballet technique, style and performance quality with due consideration of safe dance practices. Demonstrates in written and oral form the ability to analyse and synthesise information to make informed judgements of Classical Ballet 	<ul style="list-style-type: none"> Classical Ballet exam class (40%) Discuss the Classical Ballet Class with reference to safe dance practices – Viva Voce-10% 	Term 3 Week 8

Dance Preliminary Course

Task		Weighting	Outcomes	Task	Marking Criteria	Date
1	Core Performance	60%	<p>P1.1 understands dance as the performance and communication of ideas through movement and in written and oral form.</p> <p>P2.4 the student demonstrates appropriate skeletal alignment, body-part articulation, strength, flexibility, agility and coordination.</p> <p>P2.5 the student performs combinations phrases and sequences within due consideration of safe dance practices.</p> <p>P4.4 the student develops skills in critical appraisal and evaluation</p>	<p>Half Yearly Exam: Performance & film dance sequence and interview</p> <p>Process Journal</p>	<p>Performance-36%</p> <p>Journal-24%</p>	<p>Term 2</p> <p>Week 2</p>
2	Core Appreciation	20%	<p>P4.3 the student demonstrates the skill to gather record and classify information about dance.</p> <p>P4.1 the student demonstrates an understanding of the socio-historic context in which dance exists.</p> <p>P4.2 the student demonstrates the knowledge to critically appraise and evaluate dance.</p>	<p>Research Dance in Australia.</p>	<p>Essay on prescribed work-20%</p>	<p>Term 2</p> <p>Week 10</p>
3	Core Composition	20%	<p>P3.2 understands the compositional process</p> <p>P3.4 explores the elements of dance relating to dance composition</p> <p>P3.6 structures movement devised in response to specific concept/intent</p>	<p>Composition task</p>	<p>Performance of Composition-12%</p> <p>Journal-8% (hand in on day 1 of Week 8)</p>	<p>Term 3</p> <p>Week 8</p>

Design and Technology Preliminary Course

Objectives	Outcomes
<p><i>Students will develop:</i></p> <ul style="list-style-type: none"> • knowledge and understanding about design theory and design processes in a range of contexts 	P1.1 examines design theory and practice and considers the factors affecting designing and producing in design projects
<ul style="list-style-type: none"> • knowledge, understanding and appreciation of the interrelationship of design, technology, society and the environment 	P2.1 identifies design and production processes in domestic, community, industrial and commercial settings P2.2 explains the impact of a range of design and technology activities on the individual, society and the environment through the development of projects
<ul style="list-style-type: none"> • creativity and an understanding of innovation and entrepreneurial activity in a range of contexts 	P3.1 investigates and experiments with techniques in creative and collaborative approaches in designing and producing
<ul style="list-style-type: none"> • skills in the application of design processes to design, produce and evaluate quality design projects that satisfy identified needs opportunities 	P4.1 uses design processes in the development and production of design solutions to meet identified needs and opportunities P4.2 uses resources effectively and safely in the development and production of design solutions P4.3 evaluates the processes and outcomes of designing and producing
<ul style="list-style-type: none"> • skills in research, communication and management in design and production 	P5.1 uses a variety of management techniques and tools to develop design projects P5.2 communicates ideas and solutions using a range of techniques P5.3 uses a variety of research methods to inform the development and modification of design ideas
<ul style="list-style-type: none"> • knowledge and understanding about current and emerging technologies in a variety of settings 	P6.1 investigates a range of manufacturing and production processes and relates these to aspects of design projects P6.2 evaluates and uses computer-based technologies in designing and producing

Design and Technology Preliminary Course

Task	Course Component	Weighting	Outcomes	Task	Date
1	Design & Producing	35%	P1.1, P3.1, P4.1, P4.2, P4.3, P5.1, P5.2, P5.3	Design Project 1 Product and Folio	Term 2 Week 3
2	Exam	30%	P1.1, P2.1, P2.2, P4.3, P6.1, P6.2	Yearly Examination	Term 3 Weeks 8-9
3	Designing and Producing	35%	P1.1, P3.1, P4.1, P4.2, P4.3, P5.1, P5.2, P5.3	Design Project 2 Product and Folio	Term 3 Week 10

Drama Preliminary Course

Task	Outcomes	Content Area	Weighting	Due Date
1	<ul style="list-style-type: none"> • P.1.3 demonstrates performance skills appropriate to a variety of styles and media • P.1.4 understands, manages and manipulates theatrical elements and elements of production, using them perceptively and creatively • P.1.6 demonstrates directorial and acting skills to communicate meaning through dramatic action • P.2.4 performs effectively in a variety of styles using a range of appropriate performance techniques, theatrical and design elements and performance spaces • P.3.3 analyses and synthesises research and experiences of dramatic and theatrical styles, traditions and movements 	Theatrical Traditions and Performance Styles Practical: Group Performance and Log Book Written: Essay	30%	Term 1 Week 10
2	<ul style="list-style-type: none"> • P.1.4 understands, manages and manipulates theatrical elements and elements of production, using them perceptively and creatively • P.1.5 understands, demonstrates and records the process of developing and refining ideas and scripts through to performance • P.2.2 understands the contributions to a production of the playwright, director, dramaturg, designers, front-of-house staff, technical staff and producers • P.3.1 critically appraises and evaluates, both orally and in writing, personal performances and the performances of others • P3.2 understands the variety of influences that have impacted upon drama and theatre performance styles, structures and techniques • P.3.3 analyses and synthesises research and experiences of dramatic and theatrical styles, traditions and movements 	The Elements of Production in Performance Practical: Design Task Written: Essay	30%	Term 2 Week 10
3	<ul style="list-style-type: none"> • P.1.1 develops acting skills in order to adopt and sustain a variety of characters and roles • P.1.2 explores ideas and situations, expressing them imaginatively in dramatic form • P.1.5 understands, demonstrates and records the process of developing and refining ideas and scripts through to performance • P.2.1 understands the dynamics of actor-audience relationship • P.2.2 understands the contributions to a production of the playwright, director, dramaturg, designers, front-of-house staff, technical staff and producers • P.2.4 performs effectively in a variety of styles using a range of appropriate performance techniques, theatrical and design elements and performance spaces • P.3.1 critically appraises and evaluates, both orally and in writing, personal performances and the performances of others • P.3.2 understands the variety of influences that have impacted upon drama and theatre performance styles, structures and techniques 	Improvisation Playbuilding and Acting Yearly Exam Practical: Group and Individual Performance & Log Books Written Exam	40%	Term 3 Weeks 8-9

Economics Preliminary Course

Objectives	Outcomes
<p><i>Students develop knowledge and understanding about:</i></p> <p>The economic behavior of individuals, firms, institutions and governments The function and operation of markets The operation and management of economies Contemporary economic problems and issues facing individuals, firms and governments</p> <p>Students develop skills to:</p> <p>Investigate and engage in effective analysis, synthesis and evaluation of economic information from a variety of sources Communicate economic information, ideas and issues in appropriate forms</p>	<p>P1 demonstrates understanding of economic terms, concepts and relationships P2 explains the economic role of individuals, firms and government in an economy P3 describes, explains and evaluates the role and operation of markets P4 compares and contrasts aspects of different economies P5 analyses the relationship between individuals, firms, institutions and government in the Australian economy P6 explains the role of government in the Australian economy P7 identifies the nature and causes of economic problems and issues for individuals, firms and governments P8 applies appropriate terminology, concepts and theories in economic contexts P9 selects and organizes information from a variety of sources for relevance and reliability P10 communicates economic information, ideas and issues in appropriate forms P11 applies mathematical concepts in economic contexts P12 works independently and in groups to achieve appropriate goals in set timelines</p>

Economics Preliminary Course

Task	Course Component	Weighting	Outcomes	Task	Date
1	Topic 1: Introduction to Economics	30%	P2, P4, P8, P10	Economics in the Media Presentation	Term 1 Week 10
2	Topic 3: Markets	35%	P3, P7, P9, P12	In class prepared essay	Term 2 Week 9
3	All topics	35%	P1, P5, P6, P11	Yearly Exam	Term 3 Weeks 8-9

English Advanced and Standard Preliminary Courses

Task	Course Component	Weighting	Outcomes	Task	Date
1	Reading to Write	30%	Standard: EN11-1, EN1-2, EN11-3, EN11-9 Advanced: EA11-1, EA11-2, EA11-3, EA11-9	Multimodal Presentation and Written Reflection	Term 2 Week 2
2	Module B	30%	Standard: EN11-1, EN11-3, EN11-5, EN11-7 Advanced: EA11-1, EA11-3, EA11-4, EA11-5, EA11-7	Hand in essay	Term 2 Week 9
3	Module A	40%	Standard: EN11-4, EN11-6, EN11-8 Advanced: EA11-3, EA11-6, EA11-8, EA11-9	Examination comprising two sections: an essay and creative response	Term 3 Weeks 8-9

Standard: a student

EN11-1 responds to and composes increasingly complex texts for understanding, interpretation, analysis, imaginative expression and pleasure

EN11-2 uses and evaluates processes, skills and knowledge required to effectively respond to and compose texts in different modes, media and technologies

EN11-3 analyses and uses language forms, features and structures of texts, considers appropriateness for purpose, audience and context and explains effects on meaning

EN11-4 applies knowledge, skills and understanding of language concepts and literary devices into new and different contexts

EN11-5 thinks imaginatively, creatively, interpretively and analytically to respond to and compose texts that include considered and detailed information, ideas and arguments

EN11-6 investigates and explains the relationships between texts

Advanced: a student

EA11-1 responds to, composes and evaluates complex texts for understanding, interpretation, critical analysis, imaginative expression and pleasure

11EA-2 uses and evaluates processes, skills and knowledge required to effectively respond to and compose texts in different modes, media and technologies

11EA-3 analyses and uses language forms, features and structures of texts considering appropriateness for specific purposes, audiences and contexts and evaluates their effects on meaning

11EA-4 strategically uses knowledge, skills and understanding of language concepts and literary devices in new and different contexts

11EA-5 thinks imaginatively, creatively, interpretively and critically to respond to, evaluate and compose texts that synthesise complex information, ideas and arguments

<p>EN11-7 understands and explains the diverse ways texts can represent personal and public worlds</p> <p>EN11-8 identifies and explains cultural assumptions in texts and their effects on meaning</p> <p>EN11-9 reflects on, assesses and monitors own learning and develops individual and collaborative processes to become an independent learner</p>	<p>11EA-6 investigates and evaluates the relationships between texts</p> <p>EA11-7 evaluates the diverse ways texts can represent personal and public worlds and recognises how they are valued</p> <p>EA11-8 explains and evaluates cultural assumptions and values in texts and their effects on meaning</p> <p>EA11-9 reflects on, evaluates and monitors own learning and adjusts individual and collaborative processes to develop as an independent learner</p>
---	---

English Studies Preliminary Course

Task	Course Component	Weighting	Outcomes	Task	Date
1	Achieving through English	30%	ES11-1, ES11-2, ES11-3 and ES11-10	Multimodal Presentation and Written Reflection	Term 2 Week 2
2	Module A: We are Australians	30%	ES11-4, ES11-5, ES11-6 and ES11-7	Hand in Portfolio of Edited Work	Term 3 Week 4
3	Module E: Playing the Game	40%	ES11-1, ES11-7, ES11-8 and ES11-9	Examination comprising two sections: an essay and creative response	Term 3 Weeks 8-9

Studies: a student

ES11-1 comprehends and responds to a range of texts, including short and extended texts, literary texts and texts from academic, community, workplace and social contexts for a variety of purposes

ES11-2 identifies and uses strategies to comprehend written, spoken, visual, multimodal and digital texts that have been composed for different purposes and contexts

ES11-3 gains skills in accessing, comprehending and using information to communicate in a variety of ways

ES11-4 composes a range of texts with increasing accuracy and clarity in different forms

ES11-5 develops knowledge, understanding and appreciation of how language is used, identifying specific language forms and features that convey meaning in texts

ES11-6 uses appropriate strategies to compose texts for different modes, media, audiences, contexts and purposes

ES11-7 represents own ideas in critical, interpretive and imaginative texts

ES11-8 identifies and describes relationships between texts

ES11-9 identifies and explores ideas, values, points of view and attitudes expressed in texts, and considers ways in which texts may influence, engage and persuade

ES11-10 monitors and reflects on aspects of their individual and collaborative processes in order to plan for future learning

English Extension 1 Preliminary Course

Task	Course Component	Weighting	Outcomes	Task	Date
1	Text 1	30%	EE11-1, EE11-4, EE11-6	Multimodal Presentation on Independent Related Project and Written Reflection	Term 2 Week 2
2	Text 2	30%	EE11-2, EE11-3	Hand in essay	Term 3 Week 1
3	Text 3	40%	EE11-3, EE11-5, EE11-6	Examination comprising two sections: an essay and creative response	Term 3 Weeks 8-9

A student:

EE11-1 demonstrates and applies considered understanding of the dynamic relationship between text, purpose, audience and context, across a range of modes, media and technologies

EE11-2 analyses and experiments with language forms, features and structures of complex texts, evaluating their effects on meaning in familiar and new contexts

EE11-3 thinks deeply, broadly and flexibly in imaginative, creative, interpretive and critical ways to respond to, compose and explore the relationships between sophisticated texts

EE11-4 develops skills in research methodology to undertake effective independent investigation

EE11-5 articulates understanding of how and why texts are echoed, appropriated and valued in a range of contexts

EE11-6 reflects on and assesses the development of independent learning gained through the processes of research, writing and creativity

Vocational Education and Training (VET) Courses

Vocational Education and Training (VET) courses are offered as part of the Higher School Certificate (HSC) or Record of School Achievement (RoSA). VET courses are designed to deliver workplace-specific skills and knowledge and cover a wide range of careers and industries. VET courses for secondary students are developed by the NSW Education Standards Authority (NESA) and are based on national training packages.

VET courses allow students to gain both HSC or RoSA qualifications and a qualification recognised throughout Australia as part of the Australian Qualification Framework (AQF). These qualifications are widely recognised by industry, employers and tertiary training providers e.g. TAFENSW and Universities and will assist students to move easily between various education and training sectors and employment.

Public Schools NSW, Ultimo operates as a Registered Training Organisation (RTO 90072) to deliver and assess VET qualifications to secondary students.

It is mandatory for all students studying a VET course to create a Unique Student Identifier (USI). Students will require a form of identification for the creation of the USI. Examples include a Medicare Card, Australian Birth Certificate, Driver's License or a valid Passport.

Assessment in all VET courses is competency based. The student is assessed on what they can do (the skills) and what they know (the knowledge) that will equip them in the workplace. Students are either deemed "competent" or "not yet competent" by the teacher. Students who have successfully achieved competency will have the skills and knowledge to complete workplace activities in a range of different situations and environments, to an industry standard of performance expected in the workplace.

Competency-based assessment materials are designed to ensure each learner has achieved all the outcomes (skills and knowledge) to the level of the qualification. Competency-based training is based on performance standards that have been set by industry. Students will receive documentation showing any competencies achieved for the VET course undertaken.

Board developed VET courses are classified as Category B subjects and ONLY ONE can contribute to the calculation of the Australian Tertiary Admission Rank (ATAR). These courses have an optional HSC examination. Student wishing to include a VET course in the ATAR calculation must sit the HSC examination after they have completed a minimum of 4 Preliminary and/or HSC units.

Board developed VET courses have specific workplace requirements and include 70 hours of industry specific mandatory work placement or simulated workplace hours as determined by NESA.

Stage 6 Board Endorsed VET Courses count towards the HSC or RoSA but do not have HSC examinations therefore do not count in the calculation of the ATAR. Board Endorsed VET Courses have mandatory or recommended industry specific work placement.

Due to the specific requirements of a VET course it is recommended students speak to the VET Coordinator or Careers Adviser before choosing the course to ensure they are fully aware of the requirements and the course is suitable for their individual needs, knowledge and skills.



Education

PUBLIC SCHOOLS NSW ULTIMO RTO 90072
ENTERTAINMENT INDUSTRY CATEGORY B BOARD DEVELOPED COURSE ASSESSMENT SCHEDULE
Preliminary Year 2022 - HSC 2023

QUALIFICATION: Statement of Attainment towards CUA30420 Certificate III in Live Production and Services
 Training Package: CUA Creative Arts and Culture (version 5.1)

NESA code
 2 U X 2 YR - 26401
2023 HSC Exam:
26499
LMBR UI Code:
 (11 OR 12)
 CUA30420326401B

TERM	Unit Code	Units Of Competency	AQF CORE / ELECTIVE	HSC STATUS	Hrs	Assessment Task Cluster & Methods of Assessment	HSC requirements Exam estimate mark & weighting to total 100%
Term 1	6 PRELIMINARY UOCs						240 Indicative Hours over 2 years
	CPCCWHS1001	Prepare to work safely in the construction industry	E	M	10	Cluster 1 – White Card Credit transfer for this unit when delivered by another RTO. NHSPA	
Term 1/2	CUAWHS312 CUASOU311	Apply work health and safety practices Undertake live audio operations	E E	M M	15 25	Cluster 2 – Safe and Sound Written Questioning, Direct Observation, Product based methods, portfolio	35 hrs Work placement 40% Preliminary Exam
	Term 2/3	CUALGT301 CUASTA212	Operate basic lighting Assist with bump in and bump out of shows	E E	M E	25 20	
Term 3	CUAIND311	Work effectively in the creative arts industry	C	M	20	Cluster 4 – Working in the Industry TBC	
Term 4/5	6 HSC UOCs						35 hrs Work placement 60% Trial HSC Exam The final estimate exam mark will only be used as the optional HSC exam mark in the event of misadventure. This mark should be derived from either one or two formal exams. The calculation of the estimate is a school decision
	SITXCCS006 CUASOU306 CUAVSS312	Provide services to customers Operate sound reinforcement systems Operate vision systems	E E E	M E M	20 20 25	Cluster 5 – To Project and Serve Direct observation of simulated project-based activity, Research and response, Quiz, Case studies, Direct observation of role play	
	Term 6/7	CUASTA301 CUASMT301 CUAIND314	Assist with production operations for live performances Work effectively backstage during performances Plan a career in the creative arts industry	E E C	M E E	25 20 20	
NESA requires students to study a minimum of 240 hours to meet Preliminary and HSC requirements.			Total Hours 265			Units of competency from the HSC focus areas will be included in the optional HSC examination.	

Film Production Preliminary Course

Film Production is a 1 unit NON ATAR course which allows students to experience, understand, enjoy and value film and video as a social collaborative and creative art form and as an expression of culture through making and critically appreciating Film and Video.

Objectives	Outcomes	
<p>Students will develop: knowledge, skills and understanding, through the making of films, that lead to and demonstrate conceptual and technical accomplishment</p>	M1	Generates a characteristic style that is increasingly self-reflective in their film practice.
	M2	Explores concepts of artist/photographer, still and moving works, interpretations of the world and audience response, in their making of moving works
	M3	Investigates different points of view in the making of films
	M4	Generates images and ideas as representations/simulations in the making of films
	M5	Develops different techniques suited to artistic intentions in the making of films
	M6	Takes into account issues of occupational health and safety in the making of films
<p>Students will develop: knowledge, skills and understanding that lead to increasingly accomplished critical and historical investigations of film</p>	CH1	Generates in their critical and historical practice ways to interpret and explain film
	CH2	Investigates the roles and relationships among the concepts of artist, work, world and audience in critical and historical investigations
	CH3	Distinguishes between different points of view and offers interpretive accounts in critical and historical studies
	CH4	Explores ways in which histories, narratives and other accounts can be built to explain practices and interests in the field of film
	CH5	Recognises how films are used in various fields of cultural production

Film Production Preliminary Course

Task	Content	Weighting	Outcomes	Task	Date
1	Film Making, Film Criticism & History	40%	M1, M2, M3, M4, M5, M6 CH1, CH2, CH3, CH4, CH5	<p>Film Making: Short Film (30%) Students submit Term 1 short film project.</p> <p>Film Criticism & Film History: Process Diary (10%) Students submit Film Production Process Diary including all classwork, a written analysis of their own film making practice and documentation of film making projects.</p> <p>Due during assessment week</p>	Term 2 Week 2
2	Film Criticism & History	20%	CH1, CH2, CH3, CH4, CH5	<p>Film Criticism & Film History: Process Diary Students submit Film Production Process Diary including all classwork, documentation of film making projects and analysis of other film makers work.</p> <p>Due during assessment weeks.</p>	Term 3 Weeks 8-9
3	Film Making	40%	M1, M2, M3, M4, M5, M6	<p>Film Making: Portfolio of Films Students submit portfolio of films created during Terms 2 and 3.</p> <p>Due during assessment weeks.</p>	Term 3 Weeks 8-9

Food Technology Preliminary Course

Objectives	Outcomes
<p><i>Students will develop:</i> knowledge and understanding about food systems in the production, processing and consumption of food and an appreciation of their impact on society</p>	P1.1 identifies and discusses a range of historical and contemporary factors which influence the availability of particular foods P1.2 accounts for individual and group food selection patterns in terms of physiological, psychological, social and economic factors
knowledge and understanding about the nature of food, human nutrition and an appreciation of the importance of food to	P2.1 explains the role of food nutrients in human nutrition P2.2 identifies and explains the sensory characteristics and functional properties of food
skills in researching analysing and communicating food issues	P3.1 assesses the nutrient value of meals/diets for particular individuals and groups P3.2 presents ideas in written, graphic and oral form using computer software where appropriate
skills in experimenting with and preparing food by applying theoretical concepts	P4.1 selects appropriate equipment, applies suitable techniques, and utilises safe and hygienic practices when handling food P4.2 plans, prepares and presents foods which reflect a range of the influences on food selection. P4.3 selects foods, plans and prepares meals/diets to achieve optimum nutrition for individuals and groups P4.4 applies an understanding of the sensory characteristics and functional properties of food to the preparation of food products
skills in designing implementing and evaluating solutions to food situations	P5.1 generates ideas and develops solutions to a range of food situations

Food Technology Preliminary Course

Task	Course Component	Weighting	Outcomes	Task	Due
1	<ul style="list-style-type: none"> Knowledge and understanding of course content (5%) Knowledge and skills in designing, researching, analysing and evaluating (10%) Skills in experimenting with and preparing food by applying theoretical concepts (10%) 	30%	P1.1, P1.2, P3.2, P4.1, P4.2, P5.1	Task 1: Food Availability and Selection Report and practical task	Term 1 Week 9
2	<ul style="list-style-type: none"> Knowledge and understanding of course content (10%) Knowledge and skills in designing, researching, analysing and evaluating (10%) Skills in experimenting with and preparing food by applying theoretical concepts (15%) 	35%	P2.1, P3.1, P3.2, P4.1, P4.3, P4.4, P5.1	Task 2: Nutrition and Food Essay and practical task	Term 3 Week 5
3	<ul style="list-style-type: none"> Knowledge and understanding of course content (25%) Knowledge and skills in designing, researching, analysing and evaluating (10%) 	35%	P1.1, P1.2, P2.1, P2.2, P3.1	Task 3: Yearly Examination	Term 3 Weeks 8-9

Geography Preliminary Course

Task	Course Component	Weighting	Outcomes	Task	Date
1	Biophysical Interactions	35%	P1, P2, P3	In Class: Written Task based on Research	Term 1 Week 9
2	Senior Geography Project	30%	P4, P7, P9, P11	1) Research/Data Assessment 2) Oral Presentation	Term 2 Week 8
3	Global Challenges, Skills	35%	P5, P8, P10, P12	Yearly Exam	Term 3 Weeks 8-9

Legal Studies Preliminary Course

Objectives	Preliminary Course Outcomes
<p>Students will develop knowledge and understanding about:</p> <p>1. the nature and institutions of domestic and international law</p>	<p>P1 Identifies and applies legal concepts and terminology</p> <p>P2 Describes the key features of Australian and international law</p>
<p>2. The operation of Australian and international legal systems and the significance of the rule of law</p>	<p>P3 Describes the operation of domestic and international legal systems</p> <p>P4 Discusses the effectiveness of the legal system in addressing issues</p>
<p>3. the interrelationship between law, justice and society and the changing nature of the law</p>	<p>P5 Describes the role of law in encouraging cooperation and resolving conflict, as well as initiating and responding to change</p> <p>P6 Explains the nature of the interrelationship between the legal system and society</p> <p>P7 Evaluates the effectiveness of the law in achieving justice</p>
<p>A student develops skills in:</p> <p>4. investigating, analyzing and communicating relevant legal information and issues</p>	<p>P8 Locates, selects and organizes legal information from a variety of sources including legislation, cases, media, international instruments and documents</p> <p>P9 Communicates legal information using well-structured responses</p> <p>P10 Accounts for differing perspectives and interpretations of legal information and issues</p>

Task	Course Component	Weighting	Outcomes	Task	Date
1	The Legal System	30%	P1, P5, P6	Research Report on a Contemporary Law Reform Issue	Term 1 Week 8
2	The Law in Practice The Individual and the Law	35%	P7, P8, P10	Research Task: Oral Presentation	Term 3 Week 2
3	The Individual and the Law The Law in Practice The Legal System	35%	P2, P3, P4, P9	Yearly Exam	Term 3 Weeks 8-9

Mathematics Standard Preliminary Course

Objective	Outcomes
<p><i>Students will develop the ability to:</i></p> <ul style="list-style-type: none"> uses algebraic and graphical techniques to compare alternative solutions to contextual problems 	<p>MS11-1: uses algebraic and graphical techniques to compare alternative solutions to contextual problems MS11-6: makes predictions about everyday situations based on simple mathematical models MS11-9: uses appropriate technology to investigate, organise and interpret information in a range of contexts MS11-10: justifies a response to a given problem using appropriate mathematical terminology and/or calculations</p>
<ul style="list-style-type: none"> represents information in symbolic, graphical and tabular form models relevant financial situations using appropriate tools develops and carries out simple statistical processes to answer questions posed 	<p>MS11-2: represents information in symbolic, graphical and tabular form MS11-5: models relevant financial situations using appropriate tools MS11-6: makes predictions about everyday situations based on simple mathematical models MS11-9: uses appropriate technology to investigate, organise and interpret information in a range of contexts MS11-10: justifies a response to a given problem using appropriate mathematical terminology and/or calculations MS11-7: develops and carries out simple statistical processes to answer questions posed MS11-8: solves probability problems involving multistage events</p>
<ul style="list-style-type: none"> solves problems involving quantity measurement, including accuracy and the choice of relevant units performs calculations in relation to two-dimensional figures justifies a response to a given problem using appropriate mathematical terminology and/or calculations 	<p>MS11-3: solves problems involving quantity measurement, including accuracy and the choice of relevant units MS11-4: performs calculations in relation to two-dimensional figures MS11-9: uses appropriate technology to investigate, organise and interpret information in a range of contexts MS11-10: justifies a response to a given problem using appropriate mathematical terminology and/or calculations</p>
<ul style="list-style-type: none"> makes predictions about everyday situations based on simple mathematical models solves probability problems involving multistage events uses appropriate technology to investigate, organise and interpret information in a range of contexts 	<p>MS11-2: represents information in symbolic, graphical and tabular form MS11-5: models relevant financial situations using appropriate tools MS11-6: makes predictions about everyday situations based on simple mathematical models MS11-9: uses appropriate technology to investigate, organise and interpret information in a range of contexts MS11-10: justifies a response to a given problem using appropriate mathematical terminology and/or calculations</p>

Mathematics Standard Preliminary Course

Task	Course Component	Weighting	Outcomes	Task	Date
1	Earning and Managing Money F1.2 Formulae and Equations A1 Units of Measurement M1.1, M1.3 Relative Frequency and Probability S2	35%	MS11-2, MS11-5, MS11-6, MS11-9, MS11-10, MS11-1, MS11-10MS11-3, MS11-4, MS11-8,	Task 1 students allowed reference sheet	Term 1 Week 9
2	Perimeter, Area and VolumeM1.2 Classifying and Representing Data S1.1 Linear Relationships A2	25%	MS11-3, MS11-4, MS11-9, MS11-10, MS11-2, MS11-7,MS11-1, MS11-2, MS11-6	Research Activity	Term 2 Week 10
3	Algebraic Manipulation, Interpreting Linear Relationships, Earning & Managing Money, Mobile Phone Plans, Units of Measurement & Applications, Applications of Perimeter, Area & Volume, Investing Money, Taxation, Similarity of 2-D figures, right angled triangles, Statistics & Society, Data collections & sampling, Displaying & interpreting single data sets, Relative frequency & Probability, Costs of purchase and insurance.	40%	MS11-2, MS11-5, MS11-6, MS11-9, MS11-10, MS11-7, MS11-9, MS11-3, MS11-4,	Formal Assessment Task	Term 3 Weeks 8/9

Specific testing outcomes are subject to change throughout the year. Students are to be advised in writing, 2 weeks in advance of each common test by their classroom teacher

Mathematics Advanced Preliminary Course

Objectives: Students will:	Preliminary Course Outcomes
<ul style="list-style-type: none"> develop knowledge, skills and understanding about efficient strategies for pattern recognition, generalisation and modelling techniques 	<p>MA11-1 uses algebraic and graphical techniques to solve, and where appropriate, compare alternative solutions to problems</p>
<ul style="list-style-type: none"> develop the ability to use mathematical concepts and skills and apply complex techniques to the modelling and solution of problems in algebra and functions, measurement, financial mathematics, calculus, data and statistics and probability 	<p>MA11-2 uses the concepts of functions and relations to model, analyse and solve practical problems</p> <p>MA11-3 uses the concepts and techniques of trigonometry in the solution of equations and problems involving geometric shapes</p> <p>MA11-4 uses the concepts and techniques of periodic functions in the solutions of trigonometric equations or proof of trigonometric identities</p> <p>MA11-5 interprets the meaning of the derivative, determines the derivative of functions and applies these to solve simple practical problems</p> <p>MA11-6 manipulates and solves expressions using the logarithmic and index laws, and uses logarithms and exponential functions to solve practical problems</p> <p>MA11-7 uses concepts and techniques from probability to present and interpret data and solve problems in a variety of contexts, including the use of probability distributions</p>
<ul style="list-style-type: none"> develop the ability to use advanced mathematical models and techniques, aided by appropriate technology, to organise information, investigate, model and solve problems and interpret a variety of practical situations 	<p>MA11-8 uses appropriate technology to investigate, organise, model and interpret information in a range of contexts</p>
<ul style="list-style-type: none"> develop the ability to communicate and interpret mathematics logically and concisely in a variety of forms 	<p>MA11-9 provides reasoning to support conclusions which are appropriate to the context</p>

Mathematics Advanced Preliminary Course

Task	Course Component	Weighting	Outcomes	Task	Date
1	Functions, Trigonometric Functions, Calculus	35%	MA11-1, MA11-2, MA11-3, MA11-4, MA11-5, MA11-6, MA11-7	Task 1 Students allowed reference sheet	Term 1 Week 9
2	Functions	25%	MA11-1, MA11-2, MA11-8, MA11-9	Task 2 Research Activity	Term 2 Week 6
3	Calculus, Statistical analysis, Trigonometric functions	40%	MA11-1, MA11-2, MA11-3, MA11-4, MA11-5, MA11-6, MA11-7	Task 3 Assessment task	Term 3 Weeks 8-9

Specific testing outcomes are subject to change throughout the year. Students are to be advised in writing 2 weeks in advance of task by their classroom teacher.

Mathematics Extension 1 Preliminary Course

Objectives: Students will:	Preliminary Course Outcomes
<ul style="list-style-type: none"> develop efficient strategies to solve problems using pattern recognition, generalisation, proof and modelling techniques 	<p>ME11-1 uses algebraic and graphical concepts in the modelling and solving of problems involving functions and their inverses</p>
<ul style="list-style-type: none"> develop the ability to use concepts and skills and apply complex techniques to the solution of problems and modelling in the areas of trigonometry, functions, calculus, proof, vectors and statistical analysis 	<p>ME11-2 manipulates algebraic expressions and graphical functions to solve problems</p> <p>ME11-3 applies concepts and techniques of inverse trigonometric functions and simplifying expressions involving compound angles in the solution of problems</p> <p>ME11-4 applies understanding of the concept of a derivative in the solution of problems, including rates of change, exponential growth and decay and related rates of change</p> <p>ME11-5 uses concepts of permutations and combinations to solve problems involving counting or ordering</p>
<ul style="list-style-type: none"> use technology effectively and apply critical thinking to recognise appropriate times for such use 	<p>ME11-6 uses appropriate technology to investigate, organise and interpret information to solve problems in a range of contexts</p>
<ul style="list-style-type: none"> develop the ability to interpret, justify and communicate mathematics in a variety of forms 	<p>ME11-7 communicates making comprehensive use of mathematical language, notation, diagrams and graphs</p>

Mathematics Extension 1 Preliminary Course

Task	Course Component	Weighting	Outcomes	Task	Date
1	Functions	35%	ME11-1, ME11-2, ME11-6, ME11-7	Task 1 Students allowed reference sheet	Term 1 Week 10
2	Functions, Trigonometric Functions	25%	ME11-1, ME11-2, ME11-3, ME11-6, ME11-7	Task 2 Research Activity	Term 2 Week 10
3	Functions, Trigonometric Functions, Combinatorics, Calculus	40%	ME11-1, ME11-2, ME11-3, ME11-4, ME11-6, ME11-7	Task 3 Assessment task	Term 3 Weeks 8/9

Specific testing outcomes are subject to change throughout the year. Students are to be advised in writing 2 weeks in advance of task by their classroom teacher.

Modern History Preliminary Course

Objectives	Course Outcomes
<p>Knowledge and Understanding</p> <p>Students:</p> <ul style="list-style-type: none"> ● develop knowledge and understanding of a range of features, people, ideas, movements, events and developments of the modern world in their historical context ● develop an understanding of continuity and change over time. 	<p>MH11-1 describes the nature of continuity and change in the modern world</p> <p>MH11-2 proposes ideas about the varying causes and effects of events and developments</p> <p>MH11-3 analyses the role of historical features, individuals, groups and ideas in shaping the past</p> <p>MH11-4 accounts for the different perspectives of individuals and groups</p> <p>MH11-5 examines the significance of historical features, people, ideas, movements, events and developments of the modern world</p>
<p>Skills</p> <p>Students:</p> <ul style="list-style-type: none"> ● undertake the process of historical inquiry ● use historical concepts and skills to examine the modern past ● communicate an understanding of history, sources and evidence, and historical interpretations. 	<p>MH11-6 analyses and interprets different types of sources for evidence to support an historical account or argument</p> <p>MH11-7 discusses and evaluates differing interpretations and representations of the past</p> <p>MH11-8 plans and conducts historical investigations and presents reasoned conclusions, using relevant evidence from a range of sources</p> <p>MH11-9 communicates historical understanding, using historical knowledge, concepts and terms, in appropriate and well-structured forms</p> <p>MH11-10 discusses contemporary methods and issues involved in the investigation of modern history</p>

Modern History Preliminary Course

Task	Course Component	Weighting	Outcomes	Task	Date
1	Shaping the Modern World	35%	11-4, 11-6, 11-7	Source Portfolio	Term 1 Week 9
2	Historical Investigation	30%	11-2, 11-5, 11-8	In class prepared essay	Term 2 Week 8
3	Making of the Modern South Africa Decline and Fall of the Romanovs	35%	11-1, 11-3, 11-9	Yearly Exam	Term 3 Weeks 8-9

Music Course 1 Preliminary Course

Objectives	Preliminary Course Outcomes
To develop knowledge and skills about the concepts of music and of music as an art form through performance, composition, musicology and aural activities in a variety of cultural and historical contexts	P1 performs music that is characteristic of the topics studied
	P2 observes, reads interprets and discusses simple musical scores characteristic of topics studied
	P3 improvises and creates melodies, harmonies and rhythmic accompaniments for familiar sound sources reflecting the cultural and historical contexts studied
	P4 recognises and identifies the concepts of music and discusses their use in a variety of musical styles
To develop skills to evaluate music critically	P5 comments on and constructively discusses performances and compositions
	P6 observes and discusses concepts of music in works representative of the topics studied
To develop an understanding of the impact of technology on music.	P7 understands the capabilities of performing media, explores and uses current technologies as appropriate to the topics studied
	P8 identifies, recognises, experiments with and discusses the use of technology in music
To develop personal values about music.	P9 performs as a means of self-expression and communication
	P10 demonstrates a willingness to participate in performance, composition, musicology and aural activities
	P11 demonstrates a willingness to accept and use constructive criticism

Music Course 1 Preliminary Course

Task	Course Component	Weighting	Outcomes	Task	Date
1	Performance/Composition (improvisation)	10% 5%	P1, P3, P5, P7, P9, P10	Devise a group performance of selected Jazz standard, demonstrating your understanding of the style, your role in the ensemble and the element of improvisation.	Term 1 Week 8
	Musicology	15%	P2, P5, P7, P11	Performance Journal	Term 1 Week 8
2	Composition	20%	P3, P5, P7, P8, P9, P11	Compose a piece of music for film demonstrating manipulation of motif through use of different types of technology. See criteria sheet.	Term 3 Week 1
	Musicology Aural	5% 10%		Composition Portfolio	
3	Performance	15%	P1, P2, P7, P9, P10, P11, P12	Present a solo/ensemble performance representative of any one of the three topics studied in the Preliminary Course	Term 3 Weeks 5-6 Performance
	Musicology	5%		A written exam paper testing your understanding of musical concepts and contexts.	Term 3 Yearly Exam
	Aural	15%			Weeks 8-9 Written

Music Course 2 Preliminary Course

Objectives	Preliminary Course Outcomes
<p>To continue to develop musical knowledge and skills, an understanding of music in social, cultural and historical contexts, and music as an art form through performance, composition, musicology and aural activities</p>	<p><i>Through activities in performance, composition, musicology and aural, a student:</i></p> <p>P1 confidently performs repertoire, that reflects the mandatory and additional topics, both as a soloist and as a member of an ensemble</p> <p>P2 demonstrates an understanding of the concepts of music, by interpreting, analysing, discussion, creating and notating a variety of musical symbols characteristically used in the mandatory and additional topics</p> <p>P3 composes, improvises and analyses melodies and accompaniments for familiar sound sources in solo and/or small ensembles</p> <p>P4 creates, improvises and notates music which is representative of the mandatory and additional topics and demonstrates different social, cultural and historical contexts</p> <p>P5 analyses and discusses compositional processes with stylistic, historical, cultural and musical considerations</p> <p>P6 <i>Through activities in performance, composition, musicology and aural, a student:</i></p> <p>P7 discusses and evaluates music making constructive suggestions about performance and compositions observes and discusses in detail the concepts of music in works representative of the mandatory and additional topics</p>
<p>To develop an awareness and understanding of the impact of technology on music.</p>	<p><i>Through activities in performance, composition, musicology and aural, a student:</i></p> <p>P8 understands the capabilities of performing media, explores and uses current technologies as appropriate to the contexts studied</p> <p>P9 identifies, recognises experiments with and discusses the use of technology in music</p>
<p>To develop personal values about music.</p>	<p><i>Through activities in performance, composition musicology and aural, a student:</i></p> <p>P10 performs as a means of self-expression and communication</p> <p>P11 demonstrates a willingness to participate in performance, composition, musicology and aural activities</p> <p>P12 demonstrates a willingness to accept and use constructive criticism</p>

Music Course 2 Preliminary Course

Task	Course	Weighting	Outcomes	Task	Date
1	Performance	10%	P1, P2, P10, P11	Perform a piece of music representative of the mandatory topic: Music of Western Tonal Tradition. (1600 – 1900)	Term 2 Week 2
	Musicology / Aural	20%	P2, P5, P7 P11	Prepared extended response: Compare the stylistic features of two styles from the Baroque, Classical or Romantic periods with reference to two works. One of these works must be your performance piece. Refer to score examples in your extended response.	Term 2 Week 2
2	Composition	25%	P3, P4, P5, P6, P8	Present a score and live recording of a composition that demonstrates your understanding of the role of the mandatory topic – Music of Western Tonal Tradition Submit a composition portfolio. Include draft ideas and scores and a discussion of stylistic influences from the mandatory topic used in your composition.	Term 3 Weeks 1-2
	Sight-singing	5%		Sight-singing 8 bar diatonic melody.	
3	Performance	15%	P1, P2, P7, P9, P10, P11, P12	Present an item - solo/ensemble – representing your additional topic.	Term 3 Weeks 5-6 Performance
	Exam Musicology/Aural	25%		Prepared essay question in exam based on the additional topic Respond to a series of unprepared test questions reflecting the mandatory and additional topics.	

PDHPE Preliminary Course

Core 1 (Better Health for Individuals)

Critical Questions	Course Outcomes
<p>In this module, students investigate the following critical questions:</p> <ul style="list-style-type: none"> • What does health mean to individuals? • What influences the health of individuals? • What strategies help promote the health of individuals? 	<p>P1 identifies and examines why individuals give different meanings to health</p> <p>P2 explains how a range of health behaviours affect an individual's health</p> <p>P3 describes how an individual's health is determined by a range of factors</p> <p>P4 evaluates aspects of health over which individuals can exert some control</p> <p>P5 describes factors that contribute to effective health promotion</p> <p>P6 proposes actions that can improve and maintain an individual's health</p> <p>P15 forms opinions about health-promoting actions based on a critical examination of relevant information</p> <p>P16 uses a range of sources to draw conclusions about health and physical activity concepts.</p>

Core 2 (The Body in Motion)

Critical Questions	Course Outcomes
<p>In this module, students investigate the following critical questions:</p> <ul style="list-style-type: none"> • How do the musculoskeletal and cardiorespiratory systems of the body influence and respond to movement? • What is the relationship between physical fitness, training and movement efficiency? • How do biomechanical principles influence movement? 	<p>P7 explains how body systems influence the way the body moves</p> <p>P8 describes the components of physical fitness and explains how they are monitored</p> <p>P9 describes biomechanical factors that influence the efficiency of the body in motion</p> <p>P10 plans for participation in physical activity to satisfy a range of individual needs</p> <p>P11 assesses and monitors physical fitness levels and physical activity patterns</p> <p>P16 uses a range of sources to draw conclusions about health and physical activity concepts</p> <p>P17 analyses factors influencing movement and patterns of participation.</p>

PDHPE – Option 1 (First Aid)

Critical Questions	Course Outcomes
<p>In this module, students investigate the following critical questions:</p> <ul style="list-style-type: none"> • What are the main priorities for assessment and management of first aid patients? • How should the major types of injuries and medical conditions be managed in first aid situations? • What does the individual need to consider in administering first aid? 	<p>P6 proposes actions that can improve and maintain an individual's health</p> <p>P12 demonstrates strategies for the assessment, management and prevention of injuries in first aid settings</p> <p>P15 forms opinions about health-promoting actions based on a critical examination of relevant information</p> <p>P16 uses a range of sources to draw conclusions about health and physical activity concepts.</p>

PDHPE – Option 3 (Fitness Choices)

Critical Questions	Course Outcomes
<p>In this module, students investigate the following critical questions:</p> <ul style="list-style-type: none"> • What does exercise mean to different people? • What are the ways people choose to exercise for fitness? • What influences people's choice of fitness activities? 	<p>P5 describes factors that contribute to effective health promotion</p> <p>P6 proposes actions that can improve and maintain an individual's health</p> <p>P10 plans for participation in physical activity to satisfy a range of individual needs</p> <p>P15 forms opinions about health-promoting actions based on a critical examination of relevant information</p> <p>P16 uses a range of sources to draw conclusions about health and physical activity concepts</p> <p>P17 analyses factors influencing movement and patterns of participation.</p>

PDHPE Preliminary Course

Task	Course Component	Weighting	Outcomes	Task	Date
1	Core 2 - The Body in Motion	30%	P7, P8, P10, P11, P16, P17	Research hand-in task	Term 1 Week 9
2	Core 1 – (Better Health for Individuals)	30%	P2, P3, P17	Extended response- in this task students will practice an extended response to unseen questions	Term 2 Week 9
4	Yearly Examination Core 1 – Better Health for Individuals Core 2 – The Body in Motion Option 1 - First Aid Option 3 - Fitness Choices	40%	P1, P2, P3, P4, P5, P6, P7, P8, P9, P10, P11, P12, P15, P16, P17	Written Paper	Term 3 Weeks 8-9

Photography Preliminary Course

Photography (Photography, Video and Digital Imaging syllabus) is a 1 unit NON ATAR course which offers students the opportunity to explore contemporary artistic practices that make use of wet and digital photography.

Objectives	Outcomes	
<p>Students will develop: knowledge, skills and understanding, through the making of photographs and/or digital images, that lead to and demonstrate conceptual and technical accomplishment</p>	M1	Generates a characteristic style that is increasingly self-reflective in their photographic and/or digital practice.
	M2	Explores concepts of artist/photographer, still and moving works, interpretations of the world and audience response, in their making of still and/or moving works.
	M3	Investigates different points of view in the making of photographs and/or digital images.
	M4	Generates images and ideas as representations/simulations in the making of photographs and/or digital images.
	M5	Develops different techniques suited to artistic intentions in the making of photographs and/or digital images.
	M6	Takes into account issues of occupational health and safety in the making of photographs and/or digital works.
<p>Students will develop: knowledge, skills and understanding that lead to increasingly accomplished critical and historical investigations of photography and/or digital imaging</p>	CH1	Generates in their critical and historical practice ways to interpret and explain photography and/or digital imaging.
	CH2	Investigates the roles and relationships among the concepts of artist, work, world and audience in critical and historical investigations.
	CH3	Distinguishes between different points of view and offers interpretive accounts in critical and historical studies.
	CH4	Explores ways in which histories, narratives and other accounts can be built to explain practices and interests in the fields of photography and/or digital imaging.
	CH5	Recognises how photography and/or digital imaging are used in various fields of cultural production.

Photography Preliminary Course

Task	Content	Weighting	Outcomes	Task	Date
1	Photographic Artmaking, Photographic Criticism & History	40%	M1, M2, M3, M4, M5, M6 CH1, CH2, CH3, CH4, CH5	<p>Photographic Artmaking: Portfolio (30%) Students submit Term 1 portfolio.</p> <p>Photographic Criticism & History: Process Diary (10%) Students submit Photography Process Diary including all classwork, documentation of processes and research on the practice of photographers.</p> <p>Due during assessment weeks</p>	Term 2 Week 2
2	Photographic Criticism & History	20%	CH1, CH2, CH3, CH4, CH5	<p>Photographic Criticism & History: Yearly Examination Written examination based on the frames, practice and the conceptual framework.</p> <p>Due during assessment weeks.</p>	Term 3 Weeks 8-9
3	Photographic Artmaking	40%	M1, M2, M3, M4, M5, M6	<p>Photographic Artmaking: Portfolio (40%) Students submit portfolio of photographs created during Terms 2 and 3.</p> <p>Due during assessment weeks.</p>	Term 3 Weeks 8-9

Physics Preliminary Course

Course Structure

The Year 11 Physics course is organised into a number of modules. The Year 11 modules consist of core content to be covered in 120 indicative hours. Practical experiences are an essential component of the Year 11 course. Students will complete 35 indicative hours of practical work during the course within the 120 indicative course hours, including 15 hours allocated to depth studies integrating skill and knowledge outcomes.

Year 11 Course: 120 indicative hours

The course incorporates the study of:

- Module 1: Kinematics (30 indicative hours)
- Module 2: Dynamics (30 indicative hours)
- Module 3: Waves and Thermodynamics (30 indicative hours)
- Module 4: Electricity and Magnetism (30 indicative hours)

Objectives	Outcomes
<i>Students will develop further skills in:</i>	<i>A student:</i>
questioning and predicting	11-1 develops and evaluates questions and hypotheses for scientific investigation
planning investigations	11-2 designs and evaluates investigations in order to obtain primary and secondary data and information
conducting investigations	11-3 conducts investigations to collect valid and reliable primary and secondary data and information
processing data and information	11-4 selects and processes appropriate qualitative and quantitative data and information using a range of appropriate media
analysing data and information	11-5 analyses and evaluates primary and secondary data and information
problem solving	11-6 solves scientific problems using primary and secondary data, critical thinking skills and scientific processes
communicating	11-7 communicates scientific understanding using suitable language and terminology for a specific audience or purpose
<i>Students will develop knowledge and understanding of:</i>	<i>A student:</i>
fundamental mechanics	11-8 describes and analyses motion in terms of scalar and vector quantities in two dimensions and makes quantitative measurements and calculations for distance, displacement, speed velocity and acceleration
	11-9 describes and explains events in terms of Newton's Laws of Motion, the law of conservation of momentum and the law of conservation of energy
energy	11-10 explains and analyses waves and the transfer of energy by sound, light and thermodynamic principles
	11-11 explains and quantitatively analyses electric fields, circuitry and magnetism

Physics Preliminary Course

Task	Course Component	Weighting	Outcomes	Task	Date
1	Modules 1 and 2 Kinematics and Dynamics	30%	11-2, 11-3, 11-4, 11-5, 11-6, 11-7, 11-8, 11-9	Practical Skills Assessment Task (WS 25%, K&U 5%)	Term 2 Week 2
2	Module 3 Waves and Thermodynamics	30%	11-1, 11-7, 11-10 plus at least 2 of 11-2, 11-3, 11-4, 11-5, 11-6	Depth Study Assessment Task (WS 25%, K&U 5%)	Term 3 Week 1
3	All Modules: Kinematics Dynamics Waves and Thermodynamics Electricity and Magnetism	40%	11-1, 11-2, 11-3, 11-4, 11-5, 11-6, 11-7, 11-8, 11-9, 11-10	Yearly Exam (WS 10%, K&U 30%)	Term 3 Weeks 8-9

Textiles and Design Preliminary Course

Objectives	Outcomes
<p><i>Students will develop:</i></p> <p>1. knowledge and understanding of the functional and aesthetic requirements of textiles for a range of applications</p>	<p><i>A student:</i></p> <p>P1.1 describes the elements and principles of design and uses them in a variety of applications</p> <p>P1.2 identifies the functional and aesthetic requirements and features of a range of textile items</p>
<p>2. practical skills in design and manipulation of textiles through the use of appropriate technologies</p>	<p>P2.1 demonstrates the use of a variety of communication skills, including computer-based technology</p> <p>P2.2 develops competence in the selection and use of appropriate manufacturing techniques and equipment</p> <p>P2.3 manages the design and manufacture of textile projects</p>
<p>3. the ability to apply knowledge and understanding of the properties and performance of textiles to the development and manufacture of textile items</p>	<p>P3.1 identifies properties of a variety of fabrics, yarns and fibres</p> <p>P3.2 justifies the selection of fabrics, yarns and fibres for end-uses</p>
<p>4. skills in experimentation, critical analysis and the discriminatory selection of textiles for specific end-uses</p>	<p>P4.1 identifies and selects textiles for specific end-uses based on analysis of experimentation</p>
<p>5. knowledge and understanding of Australian Textile, clothing, Footwear and Allied Industries</p>	<p>P5.1 examines the status of the Australia Textile, Clothing, Footwear and Allied Industries within the global context</p> <p>P5.2 Investigates the range of career options in design, consumerism, manufacturing and retail sectors of the Australian Textile, Clothing, Footwear and Allied Industries</p>
<p>6. an appreciation of the significance of textiles in society</p>	<p>P6.1 identifies and appreciates the factors that contribute to the quality and value of textiles in society</p>

Textiles and Design Preliminary Course

Task	Outcomes	Weighting	Task	Date
1	P1.1, P1.2, P2.1, P2.2, P2.3	35%	Preliminary Project 1 – Focusing on Design	Term 2 Week 3
2	P1.1, P1.2, P3.1, P3.2, P4.1, P5.1, P5.2, P6.1	30%	Yearly Exam	Term 3 Weeks 8-9
3	P1.1, P1.2, P2.1, P2.2, P2.3, P3.1, P3.2, P4.1	35%	Preliminary Project 2 – Focusing on Properties and Performance of Textiles	Term 3 Week 10

Visual Arts Preliminary Course

Visual Arts is a 2 unit ATAR course which develops students skills in artmaking, art criticism and art history. Students create their own artworks developing skills in both conceptual and material practice. Students critically and historically research artworks, critics, historians and artists from Australia as well as from other cultures, traditions and times.

Objectives	Preliminary Course Outcomes
Art Making Outcomes	
Practice	P1 Explores the conventions of practice in artmaking.
Conceptual Framework	P2 Explores the roles and relationships between the concepts of artist, artwork, word and audience.
Frames	P3 Identifies the frames as the basis of understanding expressive representation through the making of art.
Representation	P4 Investigates subject matter and forms as representations in artmaking.
Conceptual strength and meaning	P5 Investigates ways of developing coherence and layers of meaning in the making of art.
Resolution	P6 Explores a range of material techniques in ways that support artistic intentions.
Art Criticism and Art History	
Practice	P7 Explores the conventions of practice in art criticism and art history.
Conceptual Framework	P8 Explores the roles and relationships between concepts of artists, artwork, world and audience through critical and historical investigations of art.
Frames	P9 Identifies the frames as the basis of exploring different orientations to critical and historical investigations of art.
Representation	P10 Explores ways in which significant art histories, critical narratives and other documentary accounts of the visual arts can be constructed.

Visual Arts Preliminary Course

Task	Content	Weighting	Outcomes	Task	Date
1	Artmaking, Art Criticism & Art History	30%	P1, P2, P3, P4, P5, P6, P7, P8, P9, P10	<p>Artmaking: Body Of Work - Drawing (15%) Students submit documentation of processes in VAPD and resolved drawings exploring the theme: <i>Personal and Public Spaces</i></p> <p>Art Criticism & Art History: Written Analysis (15%) Students complete written analysis of artworks using the section 1 exam format</p> <p>Due during assessment weeks</p>	Term 2 Week 2
2	Art Criticism and Art History	35%	P7, P8, P9, P10	<p>Art Criticism & Art History: Yearly Examination Written examination using the HSC format.</p> <p>Due during assessment weeks.</p>	Term 3 Weeks 8-9
3	Artmaking	35%	P1, P2, P3, P4, P5, P6	<p>Artmaking: Portfolio Of Work Students submit documentation of processes in VAPD and resolved portfolio of work including artmaking from Term 2 and 3.</p> <p>Due during assessment weeks.</p>	Term 3 Weeks 8-9

Newtown High School of the Performing Arts

Notice of Receipt of Assessment Policy HIGHER SCHOOL CERTIFICATE YEAR 11 2022 ASSESSMENT POLICY

The Principal
Newtown High School of the Performing Arts
P O Box 785
NEWTOWN NSW 2042

Dear Ms Roberts,

I have received the Year 11 Assessment Booklet.

Student's Name: (Please print)

Student's Signature: Date:

I have sighted the School Assessment Booklet and the Calendar of Tasks.

Parent/Carer's Signature: Date:

**Please sign and return this page to:
Ms S Leotta or Ms C Ansoul (Year 11 Student Advisers)
or Deputy Principal Mr P. Shields**